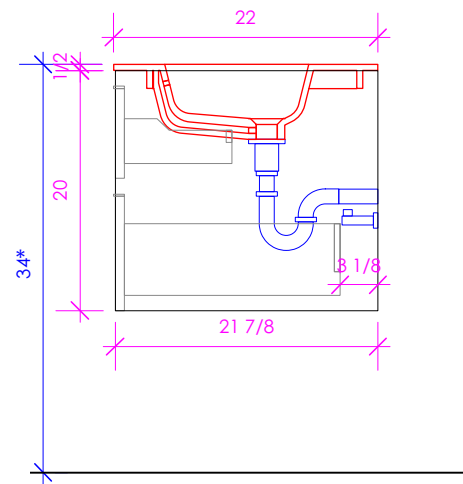
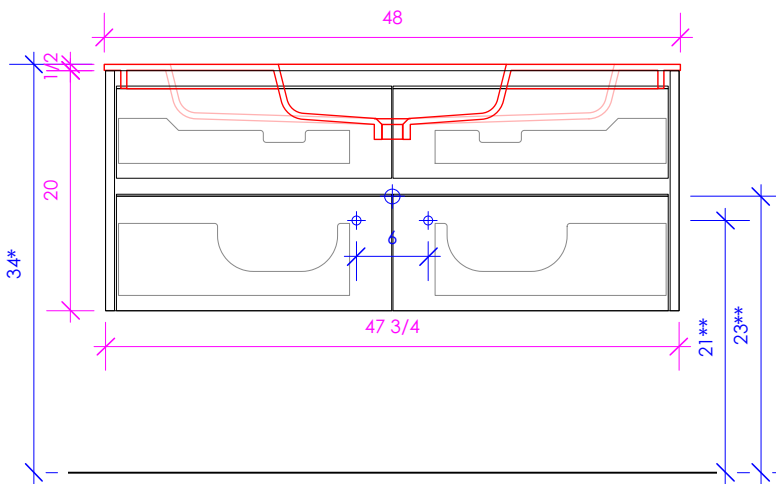
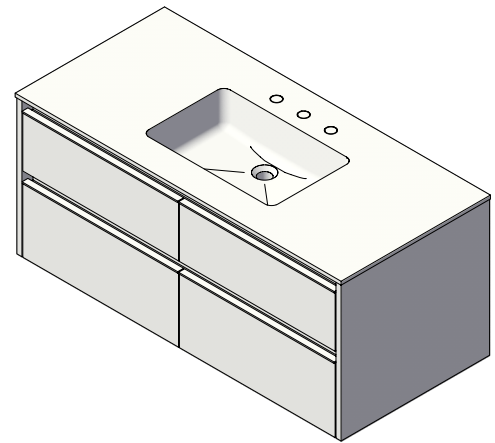


LACAVA

PRONTO UNO

PUN-W-48



SHOWN WITH K48/K48B SINK

* Recommended installation height
** Recommended plumbing location

FEATURES:

- ***QUICKSHIP PROGRAM***
- WALL MOUNT VANITY
- FOUR DRAWERS WITH SELF-CLOSE GLIDES
- SOLID WOOD FINGERPULL EDGE
- USED WITH K48, K48B, OR K48L/R VANITY TOP SINK (SOLD SEPARATELY)
- INTERIOR DRAWERS STAINED TO REFLECT EXTERIOR FINISH
- PROUDLY HANDMADE IN THE USA
- MANUFACTURED WITH LOW VOC FINISHES AND WOOD FROM RENEWABLE FORESTS

FINISHES:

WOOD:

STANDARD:

- 02 - NATURAL CHERRY
- 07 - NATURAL WALNUT
- 24 - CLASSIC WALNUT
- 20 - ASH GRAY
- 06 - WENGE
- 33 - AFRICAN MAHOGANY

PREMIUM:

- 22 - GRAY ZEBRA
- 31 - WHITE OAK
- 47 - SMOKY WALNUT
- 08 - MATTE WHITE
- 35 - MATTE ARDESIA
- 54 - MATTE TAUPE
- 16 - MATTE BLACK

LUXURY:

- 37 - WEATHERED OAK
- 52 - SILVER OAK
- 50 - HORIZON BLUE
- 85 - GLOSS WHITE
- 88 - GLOSS ARDESIA
- 84 - GLOSS TAUPE
- 86 - GLOSS BLACK
- 08T1 - WHITE W/ TEXTURE
- 35T1 - ARDESIA W/ TEXTURE
- 54T1 - TAUPE W/ TEXTURE
- 16T1 - BLACK W/ TEXTURE

COUNTERTOP: K48, K48B, K48L/R

STONE:

- WH - BIANCO
- LN - LINAC
- SL - ATHENS
- BN - STORM

QUARTZ:

- PR - PURO
- FS - FOSSIL
- AH - ASH
- CA - CREMA

SOLID SURFACE:

- M - SATIN WHITE
- G - POLISHED WHITE

METALS:

METAL:

- 21 - BRUSHED STAINLESS STEEL
- 10 - POLISHED STAINLESS STEEL
- 51 - BRUSHED BRASS
- 44 - MATTE BLACK

LACAVA reserves the right to revise any dimension or information on this sheet without notice. Dimensions are nominal and may vary within an industry accepted tolerance of 1/4". Cabinets with 'vanity top' sinks are made to the matching sink and dimensions may vary. LACAVA is not responsible for any cutouts, countertops, or furniture made without the actual product or template. Differences in color, grain, appearance, and texture are inherent in all natural woodwork and should be expected. Variances in these qualities are not deemed manufacturing defects and will not be accepted as valid reasons for return or exchanges. Plumbing specifications are only a guideline and may need alteration based on application.

6630 WEST WRIGHTWOOD
CHICAGO, IL 60707

PH: 773-637-9600
FAX: 773-637-9601

LACAVA.COM
INFO@LACAVA.COM