

LACAVA

ZOOM deck-mount electronic faucet EX18/EX18.5/EX18.35

Specifications:

Installation:	deck-mount 1-hole, touch-free
Exterior Dimensions:	H: 5 1/2" SPOUT: 6 1/4"
Material:	solid brass construction
Water use:	1 GPM (EX18), 0.5 GPM (EX18.5), 0.35 GPM (EX18.35)
Power supply:	AC/DC
Finishes:	CR - polished chrome PN - polished nickel NI - brushed nickel BG - brushed gold 44 - matte black TN - titanium
Cutout Size:	Ø 1 3/8"
Accessories included:	power adapter, flexible supply line F 1/2" and battery box



Features:

- Power supply options:
 - AC - transformer with a plug to electricity and/or
 - DC - battery pack for 4 x AA alkaline batteries (batteries not included)
 - on average lasts for 108,000 use cycles
- For cold or premixed water (mixer sold separately)
- 10 seconds metering cycles
- Sensing distance by default: 8" (20cm)
- Sensing range: 2"-12" (5cm - 30cm) can be adjusted at the factory upon request
- Water pressure: 15-90 PSI, recommended 43.5 PSI
- Water temperature: 34-113° Fahrenheit (1-45° Celsius)

- touch-free safety from spreading undesirable pathogens
- commercial grade automated fixture
- low flow promotes water use savings

Codes + Standards:

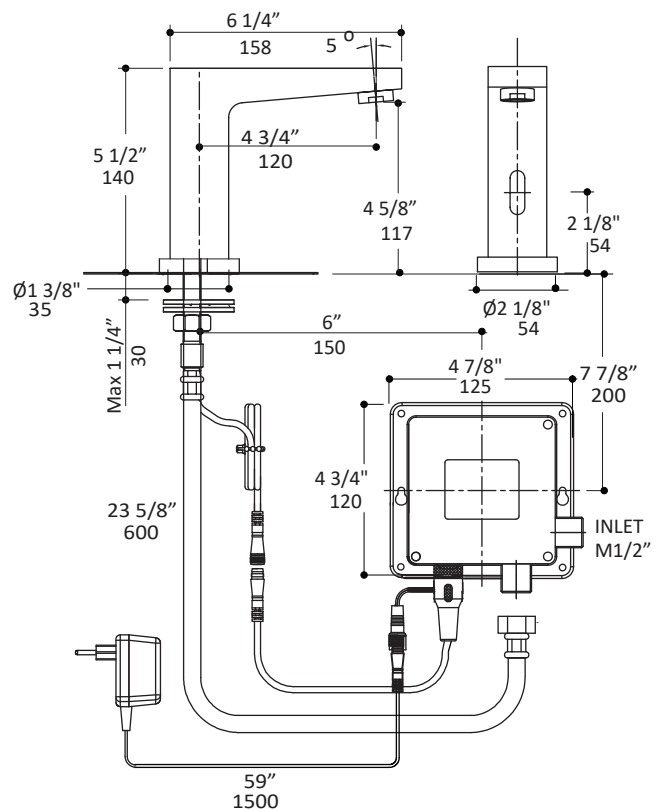
- Meets and exceeds applicable national codes and standards
- 1 GPM Watersense certified (EX18)
- 0.5 GPM CAL-Green compliant (EX18.5)
- 0.35 GPM LEED Credit (EX18.35)

ADA compliant when installed to specific requirements of this regulation



Recommended Items:

- Replacement parts:
 - #4ABATPK - replacement battery pack
 - #EX18-SENR replacement sensor
- Mixing valves (sold separately)
 - #EX20A - mechanical mixing valve
 - #EX25A - integrated thermostatic valve
- American size grid drains
 - #7100-18 - without overflow holes
 - #7100-18OF - with overflow holes



LACAVA reserves the right to revise any dimension or information on this sheet without notice. Dimensions are nominal and may vary within an industry accepted tolerance of 1/4\"/>

Revised: 3/29/2021