

Specifications:

| | |
|------------------------------|---|
| Installation: | wall mount, two cross handles |
| Exterior Dimensions: | H: 2" SPOUT: 7 3/8" |
| Material: | solid brass construction |
| Water use: | 1.2 GPM |
| Pop-up: | N/A |
| Finishes: | CR - polished chrome NI - brushed nickel |
| Weight: | 6 lbs |
| Cutout Size: | Ø 1 1/8" handles, Ø 1 3/4" spout |
| Accessories included: | European click-clack drain # 7100-160F |
| Sold Separately: | Rough-in # 1424-B and trim # 1424X-A |



Features:

- ceramic disk cartridge
- complements the Kubista Collection
- NO EXTENSIONS AVAILABLE

Codes + Standards:

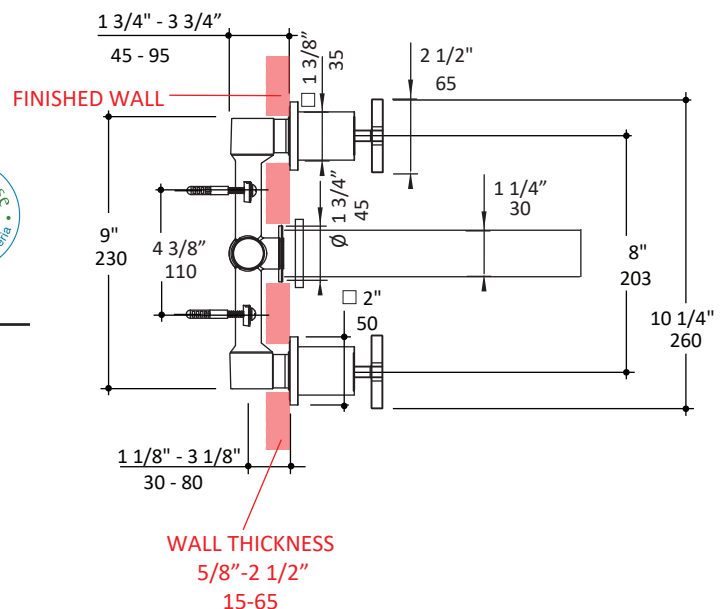
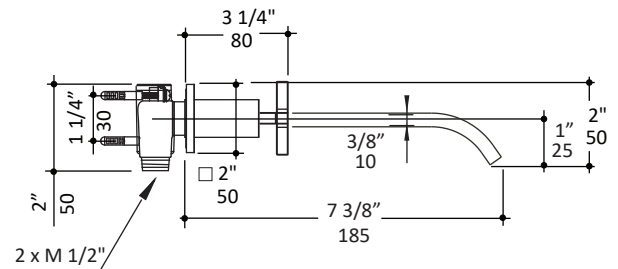
- Meets and exceeds applicable national codes and standards
 - ASME A112.18.1/CSA B125.1
 - NSF/ANSI/CAN61
 - NSF/ANSI/CAN372
 - CalGreen/CEC
- Compliant with California AB-100

ADA compliant when installed to specific requirements of this regulation



Recommended Items:

- Replacement parts:
 - R025-26 ceramic disc cartridge set hot/cold
 - R1403-AER replacement aerator
- European drain with overflow
 - 7100-160F click-clack drain
 - 7100-130F grid drain



LACAVA reserves the right to revise any dimension or information on this sheet without notice. Dimensions are nominal and may vary within an industry accepted tolerance of 1/4". Drawings provided herein are meant to give the user an idea of the product and are not made to scale. Location of plumbing is meant for reference, your specific application may vary.

Revised: 08/21/2024