

## Waterblade Tub Filler Item #W1030

### Features:

- Wall-mounted waterfall spout with two cross handles and two-way diverter
- Brass construction with hot/cold ceramic cartridges
- Includes rough-in and trim
- Flow rate: 5.3 GPM at 60 PSI
- It can be installed to meet ADA compliance

### Recommended Accessories:

- Item #W1070: Tilting square rain shower head
- Item #W1071: Wall-mount shower arm with flange



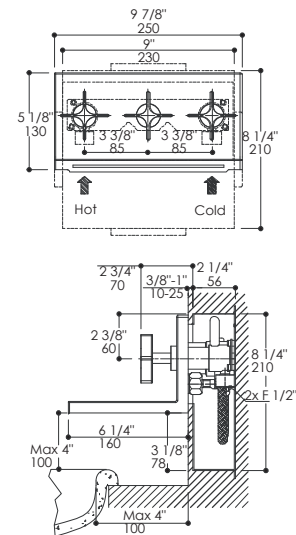
### Finish Options:

- 10 - Polished Stainless Steel
- 21 - Brushed Stainless Steel

### Parts:

- RCMB134 - Replacement ceramic cartridge pair
- RCMB135 - Replacement diverter cartridge
- RCMB154H1 - 1" extension kit

### Product Specifications:



### Notes:

Drawings provided herein are meant to give the user an idea of the product and are not made to scale. The size in inches is rounded up to the nearest 1/16".

LACAVA is committed to the highest level of customer service. Please feel free to contact us at 1-888-522-2823 (toll free) or by email at [info@lacava.com](mailto:info@lacava.com) for technical assistance or any general inquiries.