

## Stone Lavatory Item #ST002

### Features:

- Stone lavatory without overflow
- Vessel installation
- Faucet holes diameter is 1 3/8"
- Requires oversized European drain (i.e. 7100-13)
- Installation is recommended with 12" diam. cut-out, center of cut-out located on center of drain
- Lavatory drilled for faucet holes has carved out back
- ADA compliant

### Recommended Accessories:

- Item # ST004: Free-standing brushed stainless steel structure
  - One slotted shelf in wood or brushed stainless steel
- Item # ST015: Free standing wooden vanity with polished stainless steel legs
  - Two doors, one drawer, and two open cubbies
  - Hardware available in Polished Chrome or Brushed Nickel finish

### Finish Options:

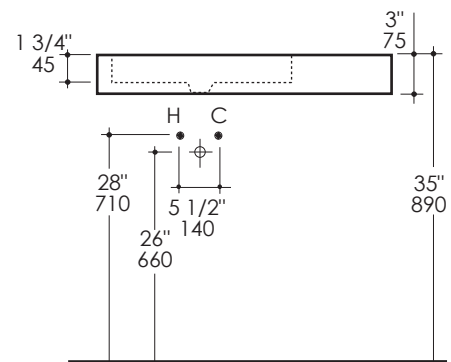
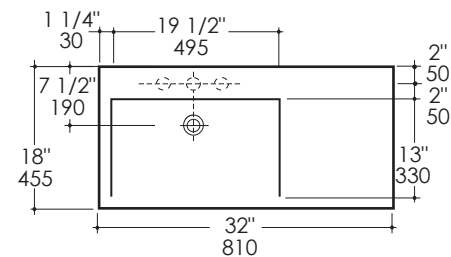
- AT - Amarillo Triana
- CM - Crema Marfil
- WH - White Carrara

### Faucet Hole Options:

- None
- One
- Three in 8" spread



### Product Specifications:



### Notes:

Drawings provided herein are meant to give the user an idea of the product and are not made to scale. The size in inches is rounded up to the nearest 1/16". Slight variances can often occur with porcelain and woodwork. Therefore, LACAVA will not be held responsible for any cutouts, countertops, or furniture made without the actual product or template from LACAVA. Plumbing specifications are only a guideline and may need to be altered based on the application.

LACAVA is committed to the highest level of customer service. Please feel free to contact us at 1-888-522-2827 (toll free) or by email at info@lacava.com for technical assistance or any general inquiries.