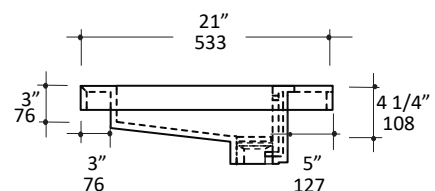
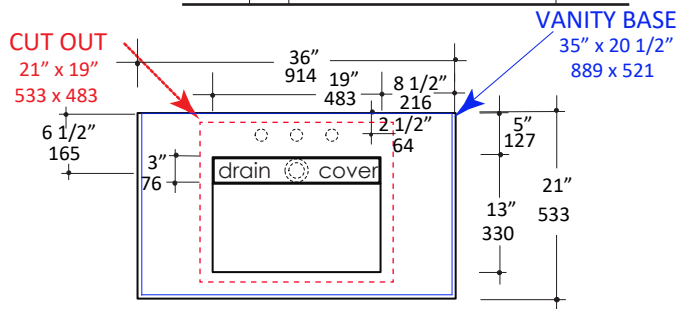
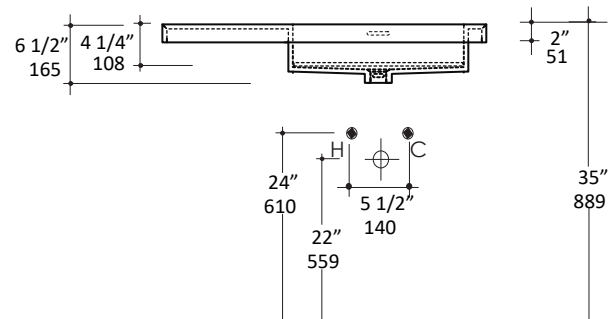
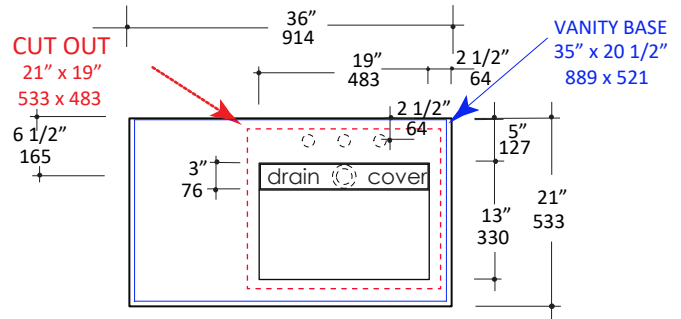


## Specifications:

<b>Installation:</b>	Vanity-top or drop-in
<b>Exterior Dimensions:</b>	36" w x 21" d x 6 1/2" h
<b>Material:</b>	Solid surface
<b>Weight:</b>	Matte white - 48 lbs Gloss white - 52 lbs
<b>Overflow:</b>	Yes
<b>Finishes:</b>	001M - Matte white 001G - Gloss white
<b>Faucet Holes:</b>	00 - no hole 01 - one centered hole 02 - two hole - center and right, 4" spread 03 - three hole, 8" spread
<b>Cutout size:</b>	21" x 19" (template available upon request)
<b>Vanity Base Size:</b>	35" x 20 1/2" (template available upon request)
<b>Faucet Hole Size:</b>	Ø 1 3/8"
<b>Drain Hole Size:</b>	Ø 1 3/4"



## Features:

- Solid surface sink with overflow
- Solid surface drain cover
- Material is heat, stain, scratch, chemical, and impact resistant
- Most standard American grid drains can also be used
- Finished back
- Unfinished bottom
- H263LT - sink on the left
- H263RT - sink on the right (shown)
- H263T - sink in the center
- Vanity bases should allow for a 1/2" overhang on front and both sides to compensate for dimensional variations of the sink top.

## Codes + Standards:

- Meets and exceeds applicable national codes and standards

## Recommended Items:

- Furniture
  - KUB-W-36L/KUB-W-36R - Wall-mount under-counter vanity without metal trims; one large drawer and two small drawers
  - KUB-W-36B - Wall-mount under-counter vanity without metal trims; two drawers with plumbing notch in back
  - KUB-LEG - Set of optional metal frame for vanity
- American grid drain with overflow
  - 7100-180F

LACAVA reserves the right to revise any dimension or information on this sheet without notice. Dimensions are nominal and may vary within an industry accepted tolerance of 1/4".

Drawings provided herein are meant to give the user an idea of the product and are not made to scale.

Revised: 09/04/2020